

# TWELFTH NIGHT

OR WHAT YOU WILL  
BY WILLIAM SHAKESPEARE

DIRECTED BY NOBBY DIMON

Open air performance with live music in spectacular venues.  
Bring chairs, rugs and picnics!

Tickets in advance: £12 (£8 U18s) – On the day: £15 (£10)

Performance 7.30pm, gates open from 6.00pm

Tickets from North Country Theatre office, 01748 825288

or Castle Hill Bookshop, Richmond or [www.northcountrytheatre.com](http://www.northcountrytheatre.com)



**Aske Hall nr Richmond**

*Thursday 23rd & Friday 24th June*

**Bolton Castle nr Redmire**

*Wednesday 29th & Thursday 30th June*

**Kiplin Hall nr Scorton**

*Friday 1st & Saturday 2nd July*

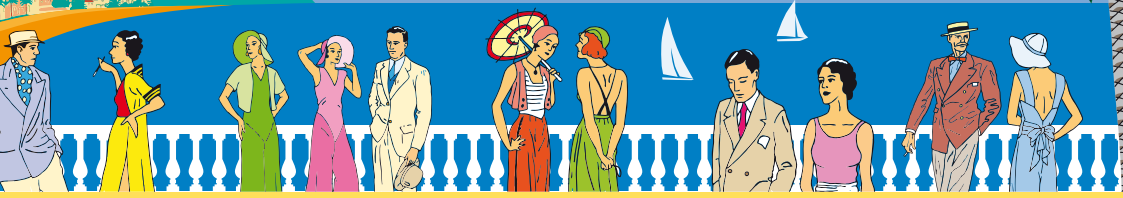
Supported by



# TWELFTH NIGHT OR WHAT YOU WILL

BY WILLIAM SHAKESPEARE  
DIRECTED BY NOBBY DIMON

Open air performance with live music  
in spectacular venues June, July 2016



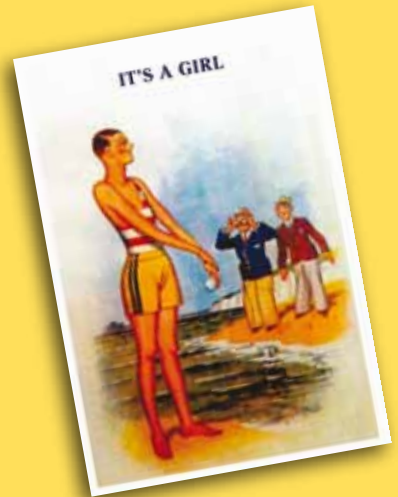
*"If this were played upon a stage now I could condemn it as an improbable fiction"*

SHAKESPEARE'S FUNNIEST COMEDY, SET AMONGST THE IDLE RICH OF A MYSTERIOUS MEDITERRANEAN PRINCIPALITY.

To celebrate **20 years of touring**, North Country Theatre have devised something special. Renowned for their inventive small scale productions of hilarious ripping yarns the company have never produced a Shakespeare play - how could they with 4 actors and a puppet dog? So this year, thanks to generous supporters, they have invited 9 actors who have worked with the company over the years to return to create a full cast production (plus puppet dog of course).

*"Come and kiss me sweet and twenty,  
youth's a stuff will not endure"*

**Music, mirth, mistaken identity,  
and madcap schemes in magnificent settings**



Aske Hall nr Richmond DL10 5HJ Thursday 23rd & Friday 24th June

Bardney Hall, Whitecross Street, Barton-upon-Humber DN18 5DF Saturday 25th June

Walcot Hall, Lydbury North SY7 8AZ Sunday 26th June

Bolton Castle nr Redmire DL8 4ET Wednesday 29th & Thursday 30th June

Kiplin Hall nr Scorton DL10 6AT Friday 1st & Saturday 2nd July

**NORTH COUNTRY THEATRE** 3 Rosemary Lane, Richmond DL10 4DP • Tel: 01748 825288

Email: [office@northcountrytheatre.com](mailto:office@northcountrytheatre.com) • [www.northcountrytheatre.com](http://www.northcountrytheatre.com)